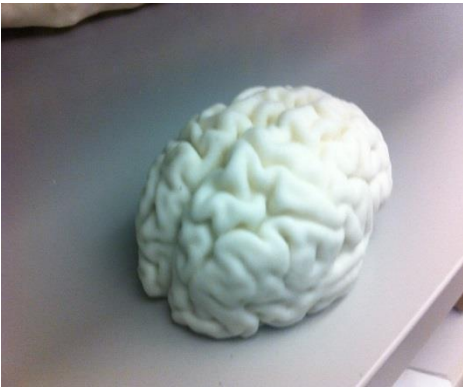


Dr. Didier Rajon creates the molds for the prostate phantoms using contour coordinates of real prostates and a three-dimensional (3-D) printer.

Multi-Dimensional Minds



Dr. Rajon creates molds and hard models of vertebrae for doctors to practice spinal surgery on. The results of using a 3-D printer are incredibly lifelike and rival my own artistic creations in believability. Dr. O'Dell and I could not be more amazed with the outcome and the realistic quality the polyvinyl chloride prostate phantoms and their tumors!

